

STEPS

TO

NET

ZERO

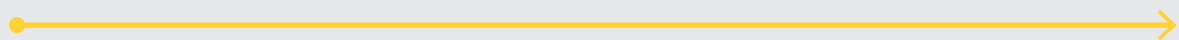


komfort
partitioning solutions



‘We didn’t inherit this world from
our parents, we’re borrowing it
from our children’

2022

2032^{*}

We will pledge to become a carbon neutral organization by 2032, for those emissions that are under our direct control.

(*) Through the Climate Change Act, the UK is obliged by law to reach net zero, nationally, by 2050. Komfort Partitioning is committed to reach net zero 18 years in advance



BENCHMARK YEAR

We will use 2019 as a benchmark year and analyse 2022's emissions against 2019. Komfort is already ISO 14001 accredited and we will adopt the Plan, Do, Check, Act approach to the targets we have set



INDIRECT EMISSIONS (ELECTRICITY)

Komfort will target reduction in our electricity usage by identifying and planning reductions in peak time usage.

2019



DIRECT EMISSIONS

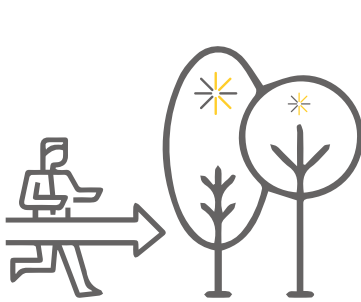
Komfort will target reduction in our gas usage by identifying and planning reductions in peak time usage. We will target our fleet of vehicles and reduce our diesel usage by reducing the idling times of each vehicle and by targeting how we plan our routes



INDIRECT EMISSIONS FROM OUR ACTIVITIES

Komfort will implement a reduction in business travel by increasing virtual meetings. We will reduce our waste to landfill even more than we do and recycle even more than we do now. The amount of miles our external transport complete will be reduced as far as reasonably practicable





Collecting data, setting baseline figures, setting reduction targets and action plans.

Engage with our suppliers to identify their impact on our carbon footprint and how we can help them reduce their impact on the environment.



Update vehicle fleet.

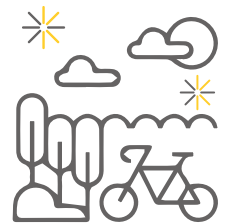
Explore the feasibility of a hybrid fleet.

2024

2022

2023

2025



Publish first annual report.

Check targets and revisit action plan, explore renewable energy



Three year review of Climate Change Action Plan

Publish the results of the review.



Develop an offset strategy

to offset any emissions we cannot eliminate, reduce or substitute



The time is now.

— — —————>

We will engage every colleague, supplier and costumer in this exciting challenge. Together we can make a difference.





Hello!

I am the first monthly report for Komfort Partioning's commitment towards net zero.

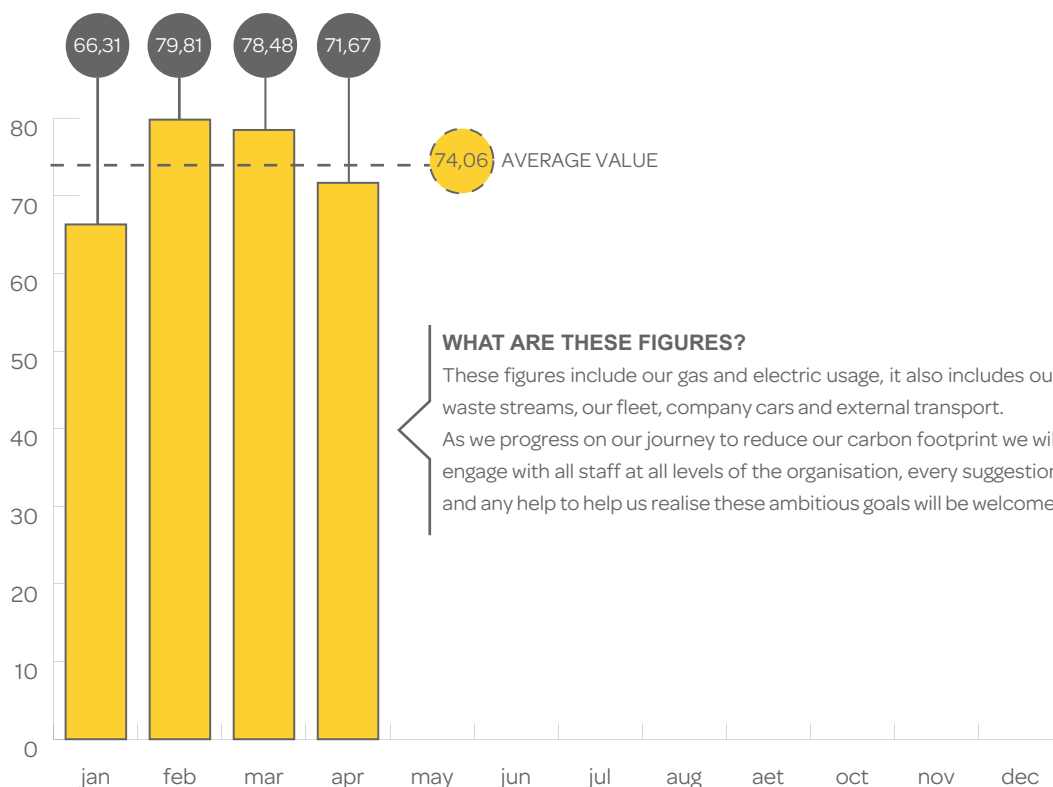
We have begun a journey to become a carbon neutral organisation, it will be a long and sometimes painful journey, but with the help off our staff, together we can all make an impact.

This monthly report allows Komfort staff see how the organisation is having an impact on the environment.

It will set out show how much carbon we have produced of and compare them against previous months figures.

Below is a graph* of how much CO2 equivalent Komfort have produce so far this year.

* These are only guesstimates at the moment, as we progress further, these figures will become more accurate.



CO2e in tonnes

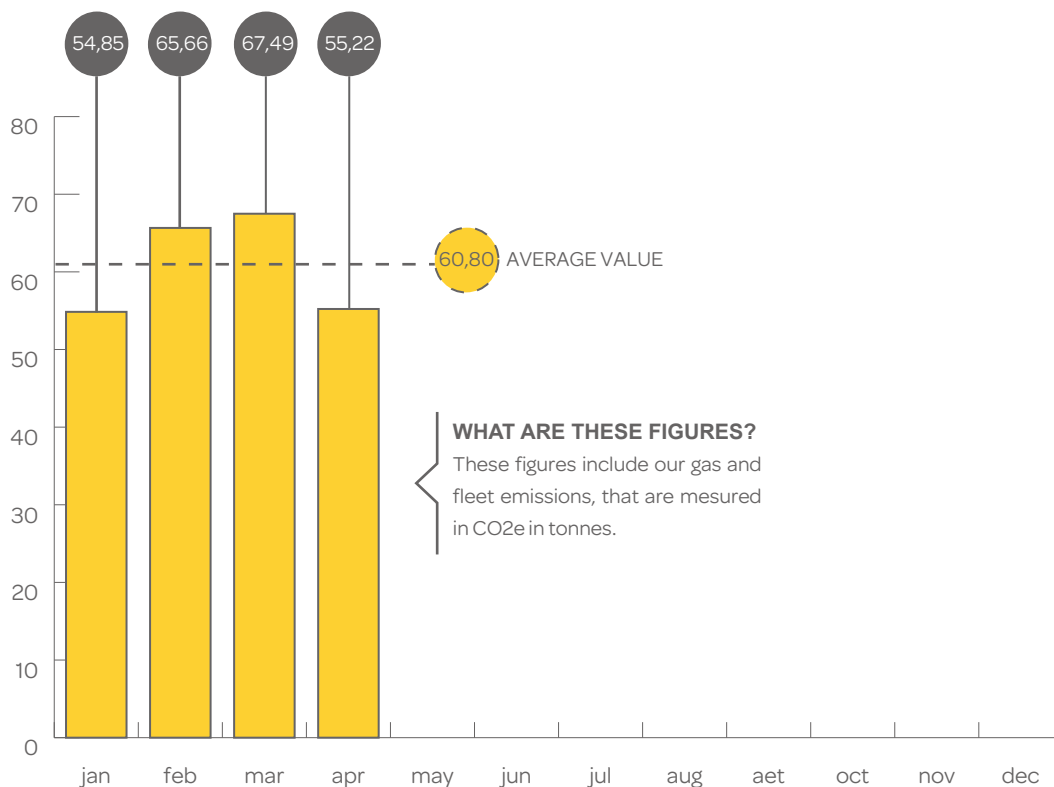
Scope 1

Direct emissions



Komfort will target reduction in the gas usage by identifying and planning reductions in peak time usage. We will target our fleet of vehicles and reduce our diesel usage by reducing the idling times of each vehicle and by targeting how we plan our routes.

As we progress on our journey to reduce our carbon footprint we will engage with all staff at all levels of the organisation, every suggestion and any help to help us realise these ambitious goals will be welcome.



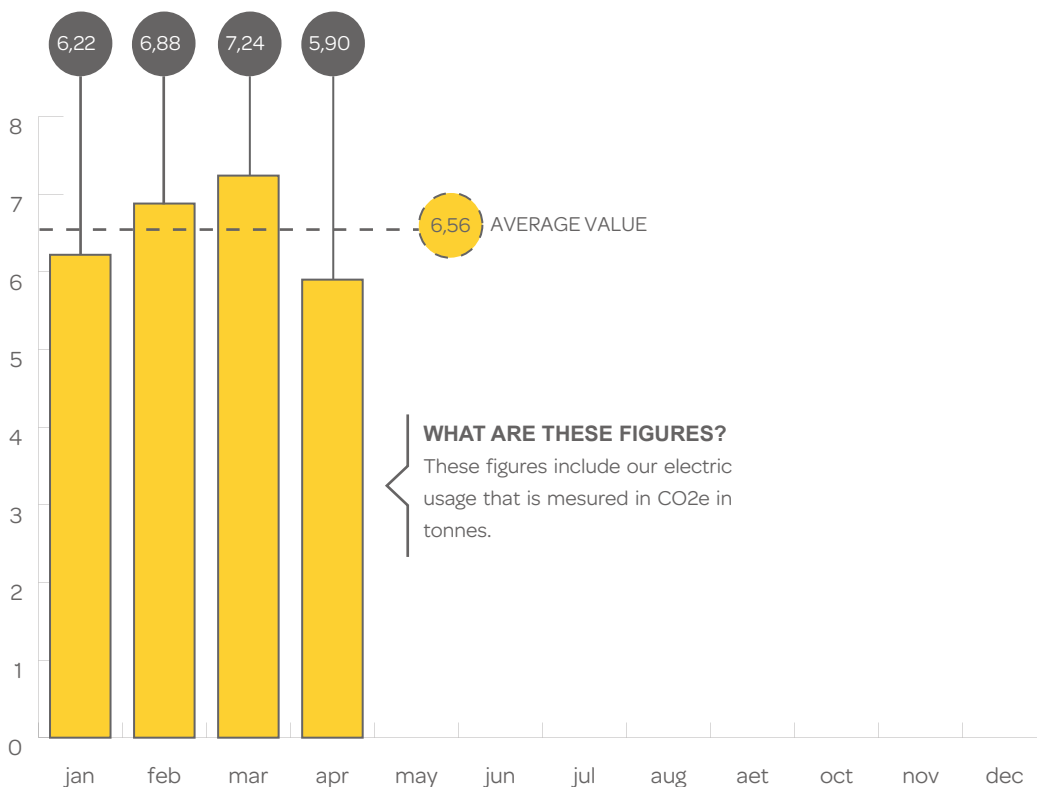
Scope 2

Indirect emissions (electricity)



Komfort will target reduction in our electricity usage by identifying and planning reductions in peak time usage.

As we progress on our journey to reduce our carbon footprint we will engage with all staff at all levels of the organisation, every suggestion and any help to help us realise these ambitious goals will be welcome.



Scope 2 - electric usage | CO2e in tonnes

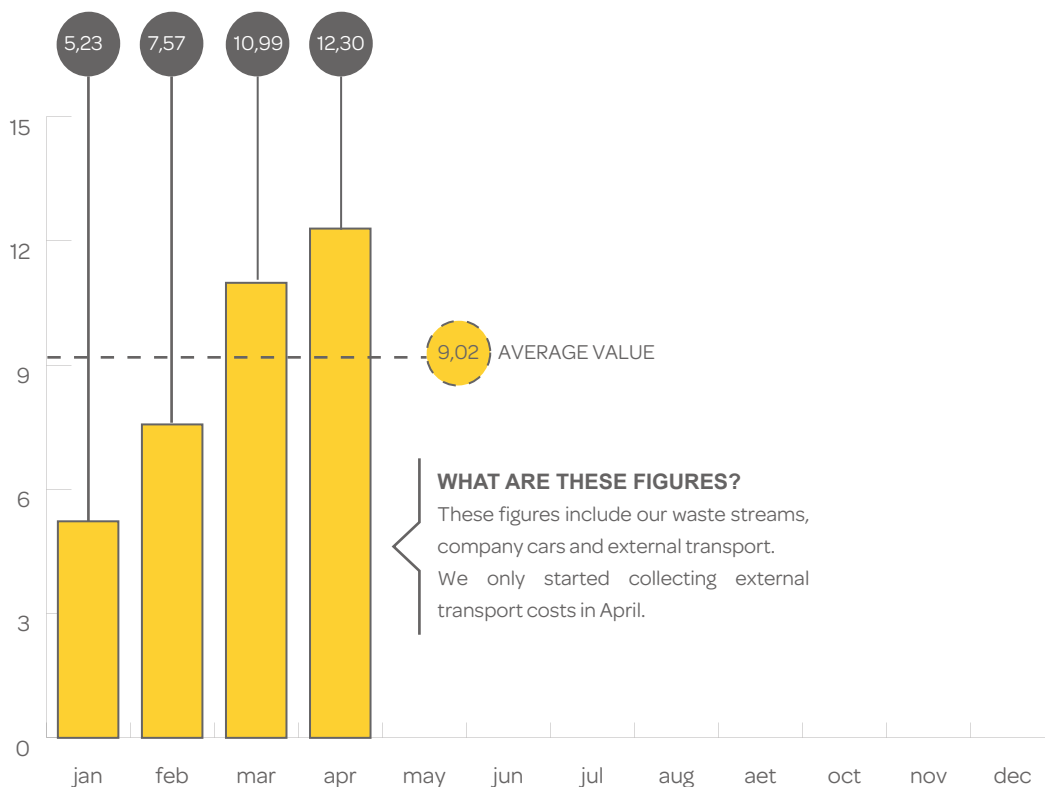
Scope 3

Indirect emissions from our activities



Komfort will implement a reduction in business travel by increasing virtual meetings. We will reduce our waste to landfill even more than we do and recycle even more than we do now. The amount of miles our external transport complete will be reduced as far as reasonably practicable.

As we progress on our journey to reduce our carbon footprint we will engage with all staff at all levels of the organisation, every suggestion and any help to help us realise these ambitious goals will be welcome.



Scope 2 - electric usage | CO2e in tonnes



This is a live document.

These monthly reports are live, organic documents, that will evolve as the climate change targets and rules change, both nationally and internationally.