

## Polar Single Glazed

### At a glance

#### Dimensions:

**Height** – up to 3000mm

#### Acoustics:

Up to 39dB (Rw)

#### Structure:

Up to heavy duty

#### Deflection head:

+/-15mm, +/-25mm

#### Door options:

Timber doors

Sonik glazed doors

Single glazed doors

#### Door frame options:

Aluminium door frame

Timber door frame

#### Glass type options:

Toughened – 10mm, 12mm

Acoustic – 10.8mm, 12.8mm

#### Weight (including nominal head & base)\*:

Toughened glass:

10mm = 27 kg/m<sup>2</sup>

12mm = 32 kg/m<sup>2</sup>

Acoustic glass:

10.8mm = 28 kg/m<sup>2</sup>

12.8mm = 33 kg/m<sup>2</sup>

#### X Blinds

#### ✓ Manifestations

#### ✓ Graphics

#### ✓ SwitchGlass

#### ✓ Kross Glaze

#### Paint/ finishes

#### ✓ Polyester powder coat

#### X Satin anodised aluminium

#### ✓ Special anodised finish

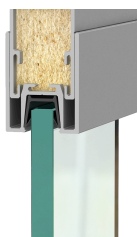
\* dependent on system configuration / specification



Available in either straight lines, faceted or curved form, Polar Single Glazed is designed with the minimum of components, thus facilitating speed of installation without compromising structural stability and rigidity. The patented bubble joint ensures a virtually frameless system with no vertical posts between modules, corners or three-way junctions.

Polar Single Glazed partitioning can be integrated with solid partitioning and with other Komfort systems through the use of optional head components. Deflection heads are available as a 2-part and 3-part option with an inbuilt deflection tolerance of either +/- 15mm or +/- 25mm to accommodate most commercial interior projects.

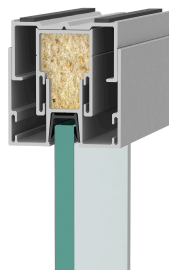
2-Part +/- 15mm deflection head



2-Part +/- 25mm deflection head



3-Part +/- 15mm deflection head



2-Part +/- 25mm deflection head



Think partitioning, think Komfort.

**Birmingham Office/Head Office**  
 Tel: +44 (0)121 332 2560  
 Email: headoffice@komfort.com

**Technical Support**  
 Email: technical@komfort.com  
[www.komfort.com](http://www.komfort.com)