

Komfort Washrooms

Realise your vision



Our expertise

Komfort divide spaces by designing and manufacturing internal glazed and solid partitions with integrated doorsets.

Using our extensive product knowledge, we are excited to introduce our stunning washroom collection.

As a UK's leading supplier of partitioning systems, we provide solutions to the commercial interiors sector which ranges from traditional design to modern contemporary styles. All our systems are compliant with current building regulations and suitable for any office fit-out or refurbishment.

As part of our continuing commitment to delivering exceptional service we offer specialist expertise in the following areas:

Structural strength, fire and acoustic performance. To guarantee the safest and widest product offering in the UK's commercial interiors sector and provide peace of mind, we operate an uncompromising programme of product testing.

Our glazed and solid, fire and non-fire rated partitioning and doors are independently tested at authorised laboratories in accordance with the relevant British Standard.

Technical knowledge. Through our long-term product research, development and experience supplying complex and large projects, we have established an unrivalled understanding of the needs of the contractor and end user.

Ongoing investment. We invest in extensive stock to ensure the widest selection of products, supported by specialist distribution to offer delivery in consolidated loads, thereby reducing disruption and minimising environmental impact.

Tooling and manufacturing facilities. Our extensive ongoing investment, means we are able to deliver cost effective, high quality products under-pinned by continual enhancements to service.

- › Full accreditation to BS EN ISO 9001, 14001, 27001 and 45001
- › PEFC and SKA rating certification
- › NBS Plus clauses

Outstanding service

Our portfolio of support services is available throughout the duration of the project and includes:

- › Estimates
- › Technical support and guidance
- › Web accessible technical documentation including junction drawings
- › Certification and installation statements
- › Sales support
- › Site surveys for glass and blinds
- › Product installation training
- › NBS specifications
- › Dedicated specifiers support line
- › RIBA approved CPD seminars



Contents

› Komfort Washrooms	04
› Premier One	08
› Premier Full Height	11
› Trinity	14
› Stature	18
› Solo	23
› Vanity Units	27
› Finishes	30
› Sanitaryware	34
› Brassware	35
› Technical	36



Komfort Washrooms

Komfort has partnered with innovative product and interior designers to create a washroom range that reflects our reputation for quality and product design.

This range is suitable for a wide range of project requirements across the commercial, hospitality, educational, healthcare, leisure sector and more. Bringing together a sense of comfort, luxury and privacy to any space.

The latest trends in bathroom design, materials and colour combine with the eco and technological credentials demanded of the modern washroom. Infrared, touch-free and LED technology ensures Komfort Washrooms are efficient eco spaces with plenty of contemporary style. Reacting to increasing demand for privacy in the washroom, Komfort offers Solo, a completely private executive washroom that reflects an upmarket en-suite with its range of design led fittings and luxury materials. It uses Komfort's partitioning and door kit technology- bringing a new quality and performance standard to the washroom market.

The range consists of five individual products:

Premier One - an antimicrobial and antibacterial, versatile and long-lasting cubicle system.

Premier Full Height - ideal for areas requiring strength, privacy and security.

Trinity – glass washroom cubicle for a modernised washroom style, perfect for on trend offices, changing and shower areas.

Stature – a luxurious floor to ceiling flush fronted system, combining elegance and design, available in laminate and real wood veneer.

Solo – a fully integrated unisex cubicle including vanity and wash area.

In addition to the cubicles, a range of complementary bespoke vanity units have been designed to enhance the ethos of the washroom. The Komfort washroom collection provides designers and specifiers with a comprehensive range of washroom products.

Bespoke

In addition to the wide range of laminate, wood veneer and glass finishes available, Komfort can apply bespoke graphics to the door and partition panels.

Utilising technologies within Komfort's signage and graphics division, a double layer film is face applied to the panels. This could include corporate branding or full scale images creating high impact aesthetics to your washroom.



Building Regulations Summary

Standard

A standard WC compartment must have a minimum 450mm diameter manoeuvring space within the cubicle. This is to be maintained between the swing of the door, the WC pan and the side wall of the compartment.

Enlarged

Where four or more cubicles are provided in a washroom, one of these should be enlarged. Enlarged cubicles are there to assist people who need extra space. The provision of an enlarged cubicle is in addition to the requirements to provide an ambulant cubicle.

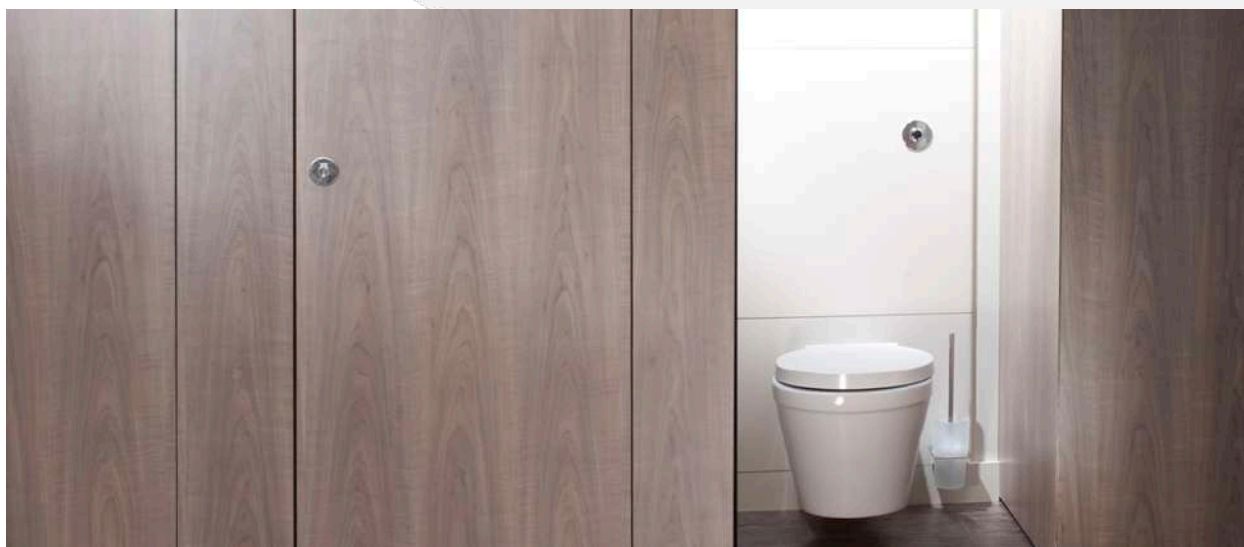
Ambulant Disabled

Every same sex washroom must have at least one WC compartment (Cubicle) that is suitable for the ambulant disabled. If there is only one cubicle in the washroom then this must be suitable for an ambulant disabled person. In addition, the ambulant cubicle must provide the correct grab rails and inner pull handles.

Choice is key with this collection - the offer extends beyond cubicle systems to every element needed to create stylish and individual contemporary washrooms. From unique vanity units to design led ranges of sanitaryware, brassware and accessories are offered as standard. With a carefully selected range of completely interchangeable key finishes, colours and shapes, there is a unique solution for every project. It brings together the best in washroom design to offer a complete solution.

Our simple to install products are finished to the highest standard and feature:

- › A wide range of panel options which offer the highest quality finish fixings throughout the range
- › Bespoke vanity units complementing the cubicle ranges
- › Variety of full height, individual or glass cubicle systems





Post formed IPS in F7858 Formica laminate finish with stainless steel grab rail.

Square profile IPS in White Oak veneer. Veneer IPS panels are only available in square profile.



Simplicity through design

The Komfort Washroom IPS (Integrated Plumbing System) re-defines the standard for easy to specify, simple to install pre-plumbed systems through several ingenious design features and attention to detail.

Robust, self supporting modules

IPS is a self-supporting module manufactured from strong 1.6mm thick galvanised steel – not just a flimsy frame. It is fully adjustable for height, plumb and level, effectively creating a pre-plumbed duct wall.

Complete and ready to install

The modules are produced to specification, including plumbing, sanitaryware, water and soil connections and then function tested. Decorative access panels are fitted already machined, ready to receive sanitaryware.

Easy to handle on site

On site, the modules are lightweight and easy to handle, ideal for transfer into often limited size washroom facilities. Vulnerable parts and sanitaryware remain protected until required, eliminating the risk of damage.

Easy 5 stage installation

Installation of IPS modules is achieved in five easy stages, which delivers a rapid and efficient completion to the project. Sanitaryware is repositioned and fixed, water and soil services coupled up and decorative access panels refitted to complete the installation.

The IPS panelling can be specified as an option with all Komfort Washroom ranges in both post formed (rounded edges) and square profiles. IPS front panels are available in a variety of materials and finishes including laminated chipboard with square or post formed edges, solid grade laminate in routed or radiused edges, veneer in square edges or toughened back painted glass. All products are produced in a BSI Registered ISO9001:2000 accredited manufacturing facility to ensure the highest standards every time.





Premier One



Premier One

Premier One is an antimicrobial and antibacterial, versatile and long lasting cubicle system. It is designed specifically to be produced using compact laminate and bolt through fixing system, robust construction and quality at a competitive price.



Made with hardwearing and water resistant materials.

Premier One is produced from Solid Grade Laminate (SGL) with heavy-duty fittings. This is made to measure and is suitable for a wet and dry application.



Curved headrail



Adjustable leg



Hinge

At a glance

Premier One – designed specifically to be produced using compact laminate and bolt through fixing system, robust construction and quality at a competitive price.

Dimensions:

Overall height – 1975mm (150mm from floor)
Partition square height – 1806mm
Partition depth – made to depth required
Pilaster height – 1825mm
End/wall pilaster width – 115mm
Centre pilaster width – 230mm
Door width – made to measure
Inward door height – 1806mm
Outward door height – 1775mm

Colour Options:

Colours are from the antimicrobial and antibacterial Polyrey Cubicle and washroom range.

Premier One is also available in others colours upon request.

Design options:

Premier cubicles can be engraved to a design of your choice.

Specification:

Doors – 13mm Solid Grade Compact (SGL) with routed edges and black core

Partitions - 13mm Solid Grade Compact (SGL) with routed edges and black core

Pilasters - 13mm Solid Grade Compact (SGL) with routed edges and black core

Hardware - Satin Anodised Aluminium (SAA) fittings - Headrail, pilaster brackets, wall brackets, adjustable leg, Pilaster lock and hinges.

Overall Cubicle Height - 1975mm including 150mm adjustable leg clearance



Premier One



Premier Full Height

Premier Full Height



Premier Full Height is perfect for areas requiring strength, privacy and security, designed using compact laminate and bolt through fixings. This is a robust construction using quality materials, which are hardwearing and water resistant to provide a floor to ceiling cubicle for any environment.



Made with hardwearing and water resistant materials.

Premier Full Height is produced from Solid Grade Laminate (SGL) with heavy-duty fittings. This is made to measure and is suitable for a wet and dry application.



Leg



Over panel



Hinge



At a glance

Premier Full Height – designed using compact laminate and bolt through fixings. This is a robust construction using quality materials, which is hardwearing and water resistant to provide a floor to ceiling cubicle for any environment.

Dimensions:

Max overall height – 2600mm (20mm from floor)
Max partition height – 2560mm (20mm from ceiling)
Partition depth – made to depth required
Max pilaster height – 2560mm
End/wall pilaster width – 115/123mm
Centre pilaster width – 230mm
Door width – made to measure
Inward door height – 1900mm

Colour Options:

Colours are from the antimicrobial and antibacterial Polyrey Cubicle and washroom range.

Premier Full Height is also available in others colours upon request

Design options:

Premier cubicles can be engraved to a design of your choice

Specification:

Doors – 13mm Solid Grade Compact (SGL) with routed edges and black core

Over panel - 13mm Solid Grade Compact (SGL) with routed edges and black core

Partitions - 13mm Solid Grade Compact (SGL) with routed edges and black core

Pilasters - 13mm Solid Grade Compact (SGL) with routed edges and black core

Hardware - Satin Stainless Steel (SSS)
fittings - Pilaster brackets, wall brackets, leg, lock and hinges.

Overall Cubicle Height - Made to measure
Max Floor to Ceiling Height - 2600mm



Trinity



Trinity

Trinity is Komfort's glass washroom cubicle which creates a stylish and contemporary look to any space, perfect for on trend offices, changing and shower areas. Hygienic, easy to clean and resistant to scratch, Trinity features polished flat edges manufactured from Toughened Eco Satin glass.



Trinity

Trinity with frosted finish on one side as standard. Satin stainless steel hinge and clamp headrail details.

Trinity is produced using 10mm Satin Polished glass which can be complemented with Satin stainless hardware.

All the Trinity products can be made to measure for both wet and dry applications.

Samples of glass finish will always be given to customer to approve prior to manufacture.



Headrail with tubular stainless steel and clamps.



Adjustable stainless steel legs, brushed finish.

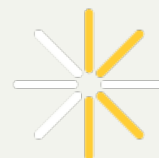


Lever operated indicator bolt, cylindrical front with emergency release in stainless steel.



Trinity is complemented with hardware with a higher grade of stainless steel for improved corrosion resistance.

Trinity



At a glance

Trinity – glass washroom cubicles with polished flat edges manufactured from 10mm Toughened Eco Satin Glass.

Dimensions:

Overall height – 2085mm (150mm from floor)

Partition height – 1850mm

Partition depth – made to depth required

Pilaster height – 1850mm

Pilaster width – 115mm

Door width – made to measure

Door height – 1850mm

Colour Options:

Doors/ partitions/ pilasters –
Satin Sandblasted Glass

White and black screen-print available upon request.

Specification:

Doors – 10mm Eco Sat Mate Toughened Glass, Polished Edges

Partitions - 10mm Eco Sat Mate Toughened Glass, Polished Edges

Pilasters - 10mm Eco Sat Mate Toughened Glass, Polished Edges

Hardware - Satin Stainless Steel (SSS) fittings – Headrail, pilaster brackets, wall brackets, adjustable leg, Pilaster lock and hinges

Overall Cubicle Height - 2085mm including 150mm adjustable leg clearance.

Trinity



Stature



Stature

Stature and Stature with overpanel are flush fronted floor to ceiling washroom systems. This luxury system combines elegance and design, and is available in laminate and real wood veneer.



Run of Stature with overpanel cubicles in Polyrey Frutier Cendré F012 laminate, with outward opening cubicle as recommended in Building Regulations for ambulant toilet. This is complemented by Orbis vanity unit, Duravit Starck washbasin and Sanindusa Tube sensor tap.



Stature doors and pilasters are formed from a high quality 38mm chipboard core and hardwood edge for a luxurious appearance. Doors are rebated to create a flush front and include a sprung hinge, stainless steel indicator and mortise lock.

To complete the quality aesthetics, the aluminium extruded wall channels are colour coded to complement the pilaster and partition finish.

Stature is always on a 20mm leg and a minimum of 30mm from the ceiling. It is not fixed to the ceiling, lighting or ventilation and the squareness of the walls and floor must be confirmed as this range has minimum adjustment.



Oak veneered square profile IPS unit with RAK Metropolitan wall hung WC and sensor flush.



Stainless steel foot detail creating 20mm floor to partition gap.



Stature with overpanel including outward opening door.

Stature



Full height Stature in Polyrey Blanc Megeve BO70 laminate applied to the doors and pilasters with LED lighting within headtrack. The inside of the cubicle is finished in oak veneer throughout.

Stature

At a glance

Stature - a flush fronted floor to ceiling washroom system available full height or with overpanel add to a maximum height of 2.8m.

Dimensions:

Door

Thickness – 38mm

Height – up to 2800mm
(2000mm with overpanel)

Partition

Thickness – 24mm

Height – up to 2800mm

Weight Approx (kg):

Door – 40kg (2400mm x 620mm)

Pilaster – 13.5kg (2400mm x 200mm)

Partition – 60kg (2400mm x 1500mm)

Applied Graphics:

Applied graphics

Available applied to doors and

Pilasters, plus overpanel if applicable

IPS Available:

Square or post formed edge laminated
chipboard

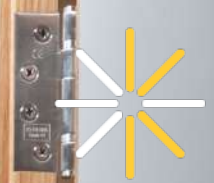
Radiused edge Solid Grade

Laminate (SGL)

Polished edge toughened, back painted
glass

Back Painted Glass:

Available for IPS



Stature



Solo



Solo

Solo washrooms are completely enclosed individual washrooms that can be unisex, or user defined and will blend in with your interior space.



Solo

Solo with 6mm back painted glass IPS panels in grey RAL 9022. Mirrors are flush with the panelling and the IPS incorporates Sanindusa Flux wall hung basin, Vado Infra red Itech mounted sensor tap.

Solo is produced using Komfort's high quality stud and track wall construction and can incorporate seamless detailing.

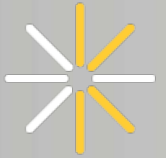
A 44mm veneered door is offered and can be used with a range of our door frames to best suit your specification.



Solo
integrated
washroom

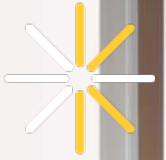


Solo can be grouped or individual washrooms according to your specification. Bespoke backlit IPS panel dividers have been used to create an eye catching and calming interior. Standard designs can be found in the swatches section of the brochure, however any design can be applied onto the perspex creating a completely bespoke interior.



Solo





At a glance

Solo – a unisex individual washroom environment.

Dimensions:

As per specification

Weight Per m2 (kg):

Dependant on specification

Applied Graphics:

Dependent on specification

IPS Available:

Square or post formed edge laminated chipboard

Radiused edge Solid Grade Laminate (SGL)

Polished edge toughened, back painted glass

Back Painted Glass:

Available for IPS



Vanity Units



Vanity Units

A vanity unit is a necessity in any washroom that can be specified to align with and complement cubicles and washroom interiors. The Komfort Washroom vanity units have been designed to create a lasting statement with LG HI-MACS cast units and high-end laminate finished simple designs.



Bespoke Pyramid freestanding washbasin. These can be specified individually or to your requirements. The units are formed from high quality LG HI-MACS.

Wave vanity unit in LG HI-MACS M104 Roma finish and Duravit Starck washbasin.



Block vanity unit in Formica F5373 Nocturn Wood matt finish laminate and Sanindusa Flow washbasin with Vado Itech sensor tap.



Wall hung Orbis vanity unit in HI-MACS S05 grey finish. This unit can house an individual basin or up to four.



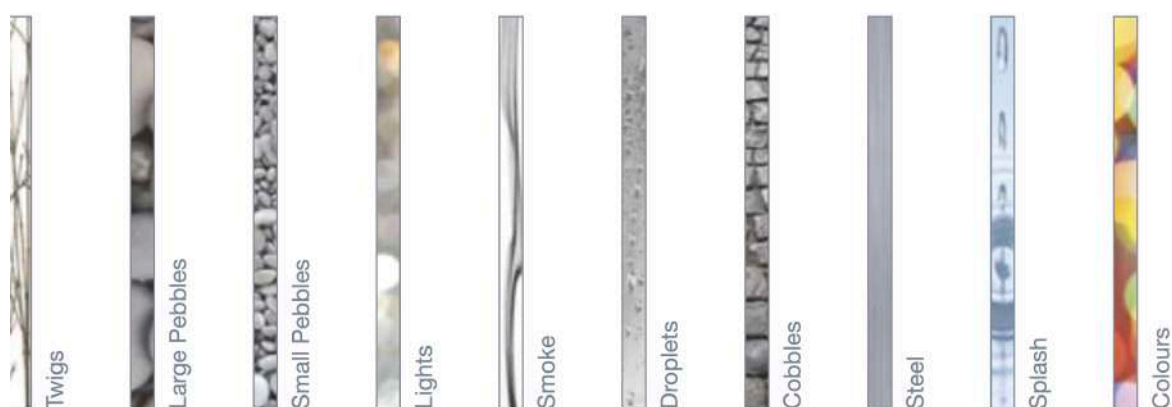
Vanity Units





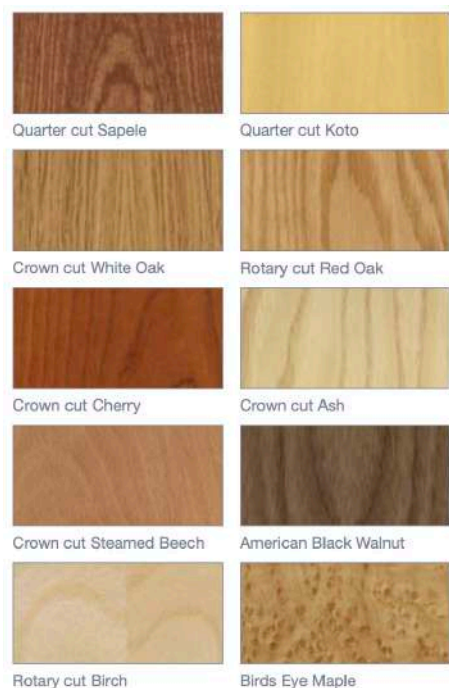
Finishes/ Swatches

Additional finish options available on request. Glass can be back painted to any RAL colour reference.



Finishes/ Swatches

Door veneers



LG HI-MACS finishes





Finishes/ Swatches

Polyrey finishes

Finishes/ Swatches



Note: These colours are printed for guidance only and may vary slightly from the actual finish of the product.



Finishes/ Swatches

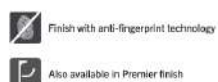
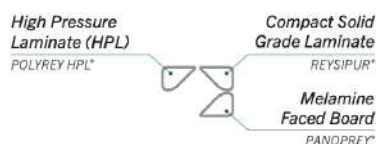
Polyrey finishes



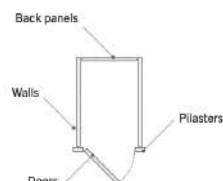
Finishes/ Swatches

Note: These colours are printed for guidance only and may vary slightly from the actual finish of the product.

Washroom Décor Complementarity



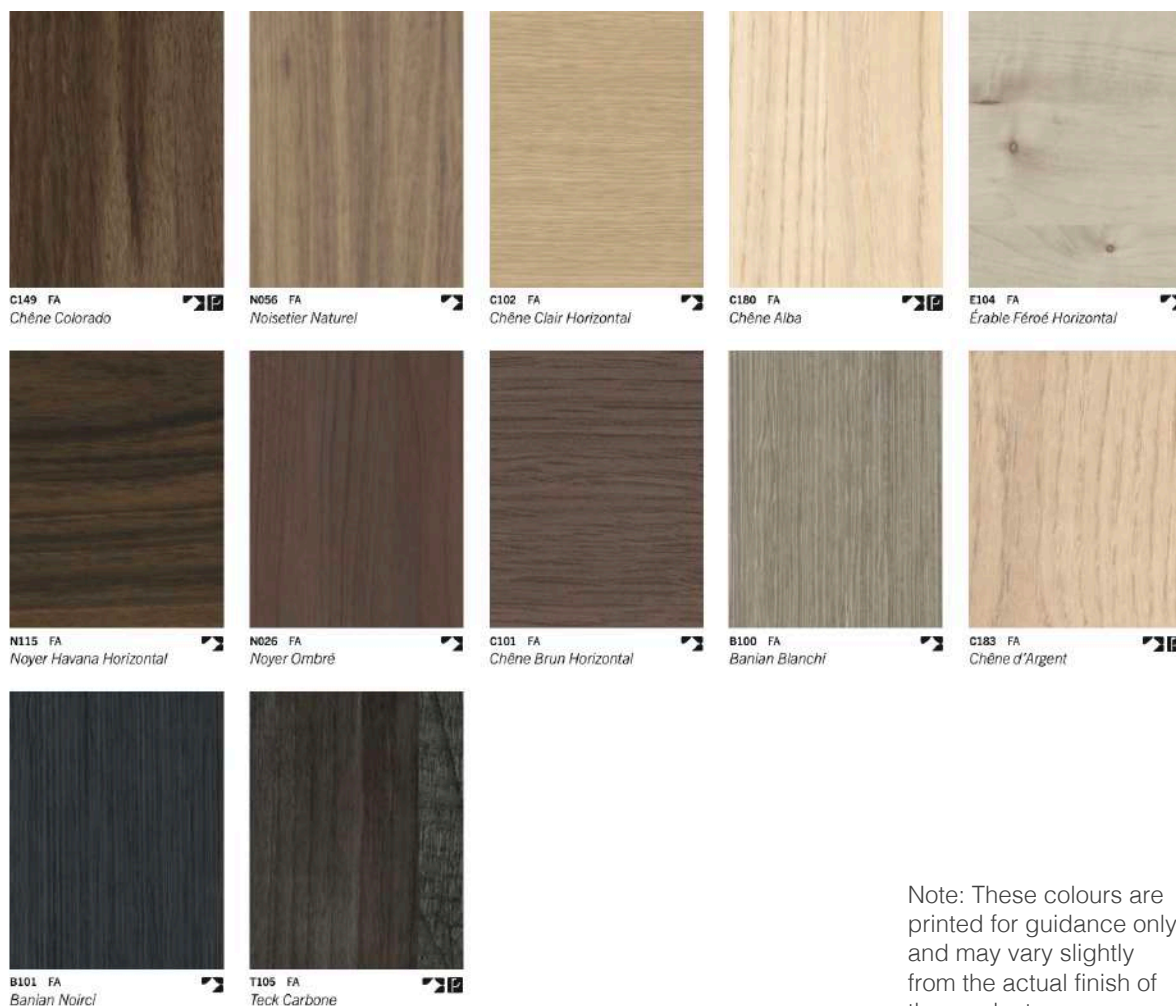
CUBICLE
= FA - SURF





Finishes/ Swatches

Polyrey finishes - woods



Note: These colours are printed for guidance only and may vary slightly from the actual finish of the product.

Polyrey finishes - materials





Sanitaryware - washbasins

This range from various luxury brands has been specially selected to complement the vanity and cubicle units of Komfort Washrooms.

Sanitaryware



Duravit Starck 1 washbowl
White ceramic - 460mm



Sanindusa Flow
washbasin 47



Sanindusa Flux 65
wall hung washbasin

Sanitaryware - WC



Sanindusa Reflex
suspended WC



Philip Watts Design Gloo
urinal



RAK Metropolitan wall
hung WC



Sanindusa Advance wall
hung WC

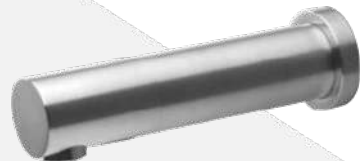


Brassware

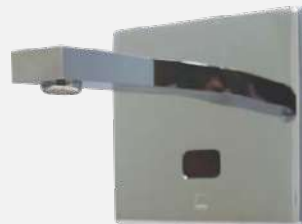
Crosswater Glide
Tall basin tap



Sanindusa Tube sensor
tap



Vado infra-red ltech wall
mounted top



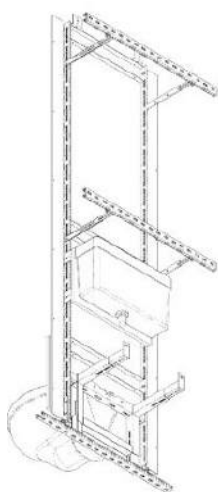
Acrylic signs

We also offer a range of Perspex self adhesive indicator acrylic signs. These are available in any colour variations.

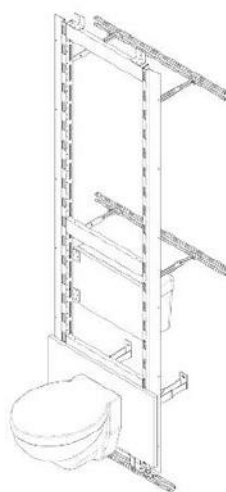


Technical

IPS units



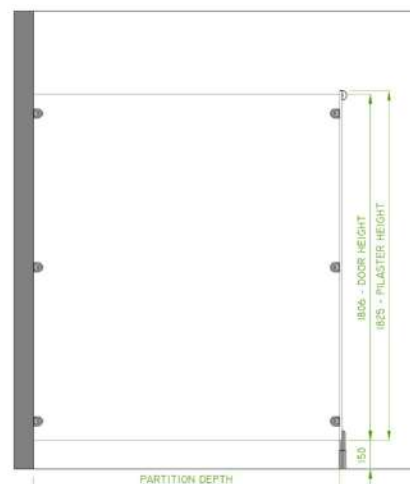
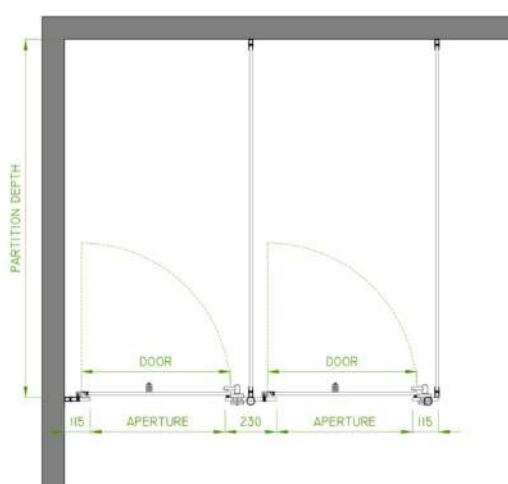
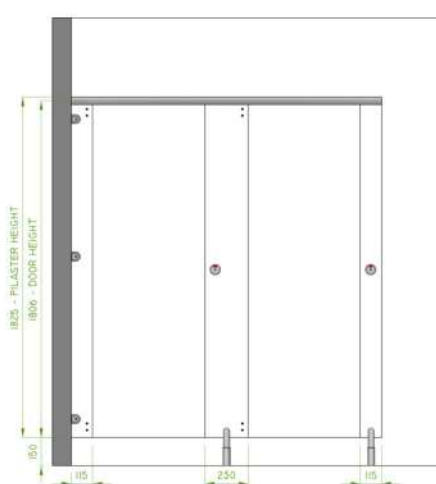
IPS Module complete with wall mounted pan and frame



IPS Module rear view

Technical

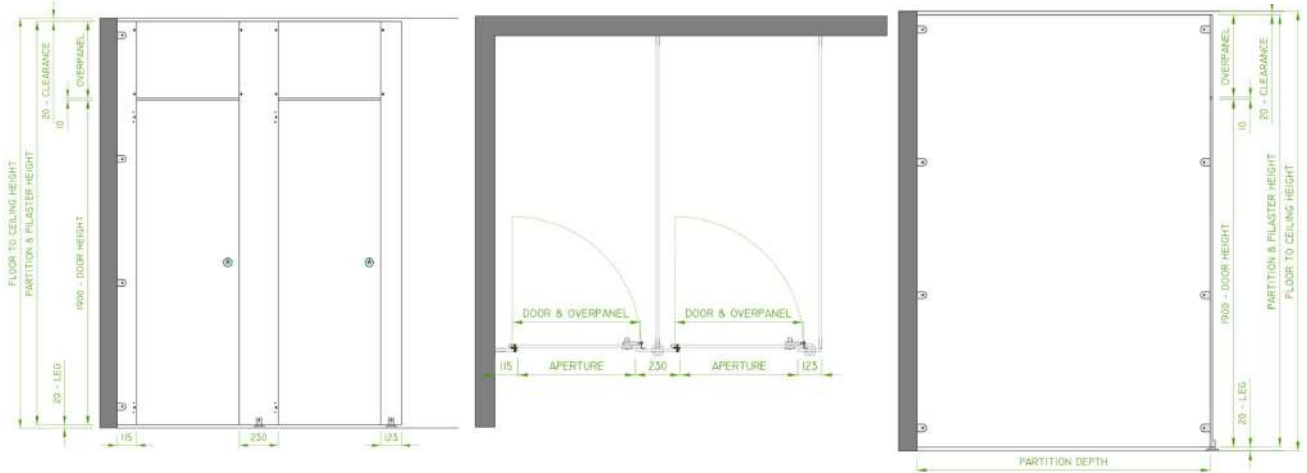
Premier One





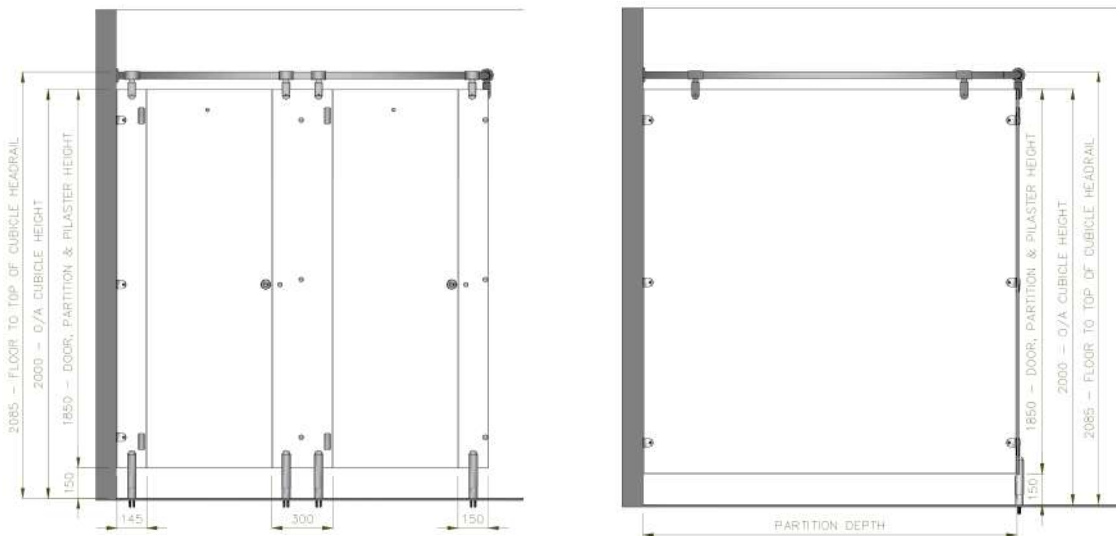
Technical

Premier Full Height



Technical

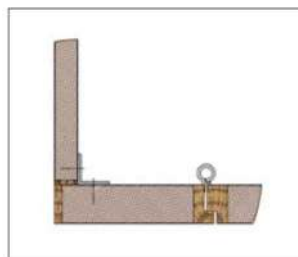
Trinity



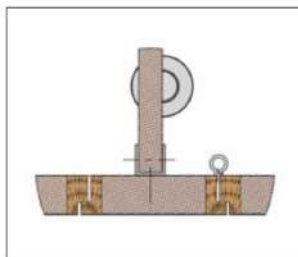


Technical

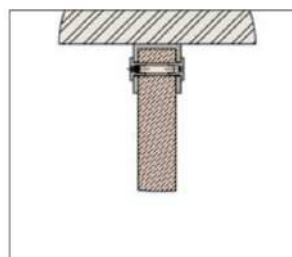
Stature



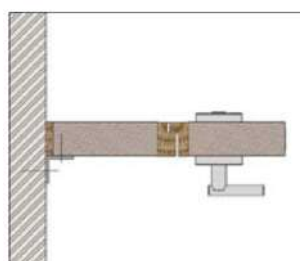
End plaster



Centre plaster with inward opening door



Wall fixing (same for Outline)

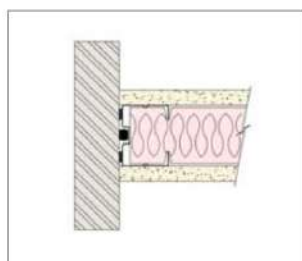


Wall plaster with outward opening door

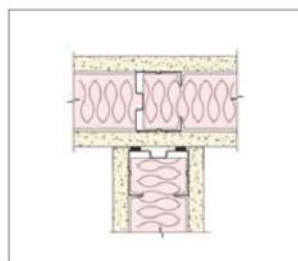
These drawings are for guidance only.
For comprehensive information please
contact our technical department.

Due to a policy of continuous product
development we reserve the right to
change product specification without
prior notice.

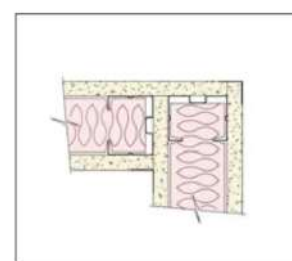
Solo



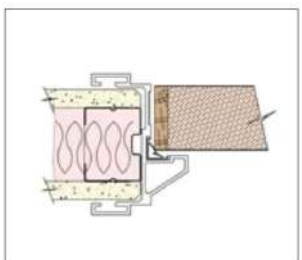
Solid abutment



3 way solid junction



90° junction



Solid to doorset junction

Komfort Washrooms

Realise your vision

Washrooms@komfort.co.uk